

tech drawings

The intended purpose of this series of technical drawings has the intended purpose of detailing the design for manufacturing purposes. The technical drawings provided give enough detail and specifications as such that another could reproduce the original design without the original design files enclosed in this package.



table of contents

bill of materials
assembly drawings
exploded views
technical part drawings



bill of materials

part name	creation method, material	image	price	quantity	drawing no.
base plate	flip cnc milled, wood selected to match airport decor		base price of \$100	1	4
luggage pad	laser cut or stamped, leather colour selected to match airport decor with embossed logo		base price of \$100	1	n/a
piezo-electric luggage pad	shelf bought part, piezo electric material		\$60	1	n/a
speakers	shelf bought part, rectangular speakers embedded within the base unit connected with the main tech unit		\$10	2	n/a
light strips	shelf bought part cut to size to suit purpose, LED light strip 8mm wide		\$20	5	n/a
light tracks	shelf bought part cut to size to suit purpose, aluminium extrusion 10mm wide		\$20	5	n/a
light cover strips	shelf bought part cut to size to suit purpose, plastic semi-opaque slot in strip		included with light tracks	5	n/a
arms	die cast arm with inserted high shear shafts and nylon sleeves, aluminium die cast with annodised black finish		\$ 5,000 - 10,000 mold with part price \$75	5	5
top hub pieces	die cast hub pieces with inserted nylon sleeves and cut threads, aluminium die cast with annodised black finish		\$ 2,000 - \$ 4000 mold with part price \$25	5	9
bottom hub	die cast hub with cut threads, aluminium die cast with annodised black finish post welding process		\$ 2,000 - \$ 4000 mold with part price \$50	1	7/8
main shaft	shelf bought part cut to size, aluminium extruded part annodised black finish post welding process		\$25	1	n/a
ball joint	shelf bought part, aluminium housings to be annodised black finish post welding process		\$20	1	n/a
inner leather cable	shelf bought part cut to size, steel braided cable thread through arms and leather material		\$4	1	n/a

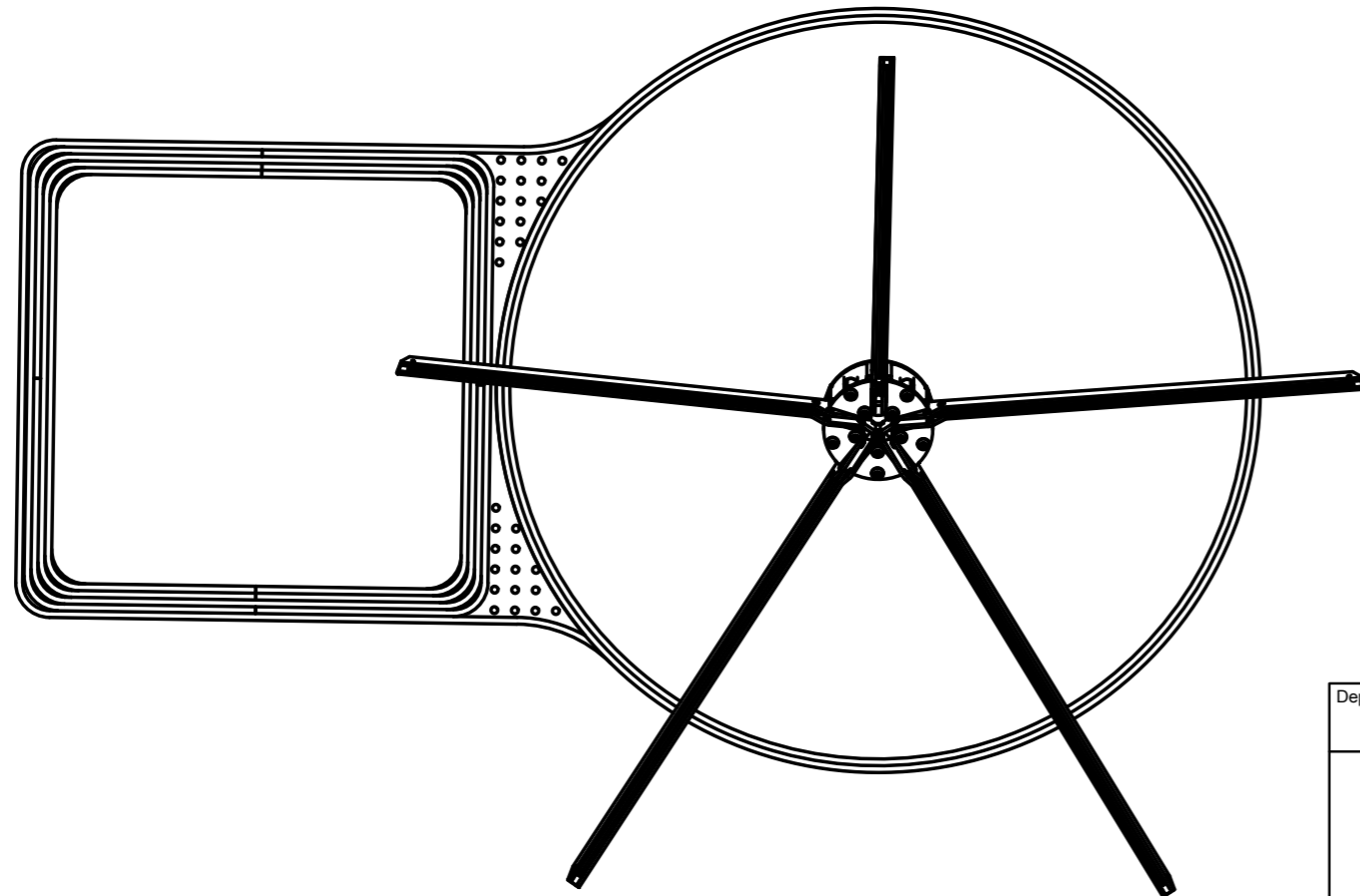
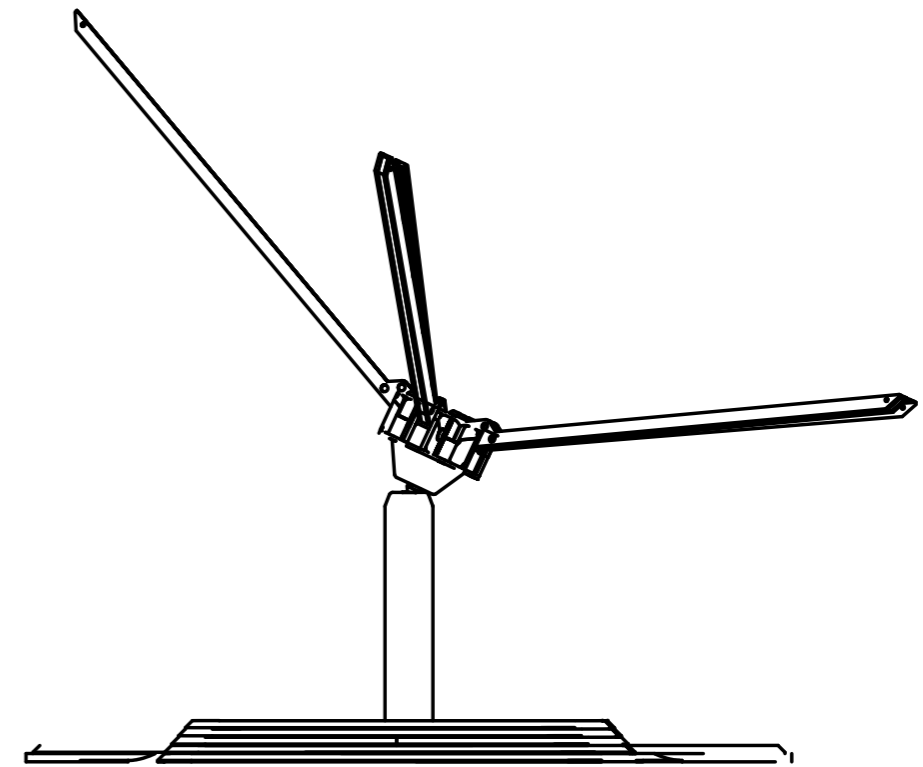
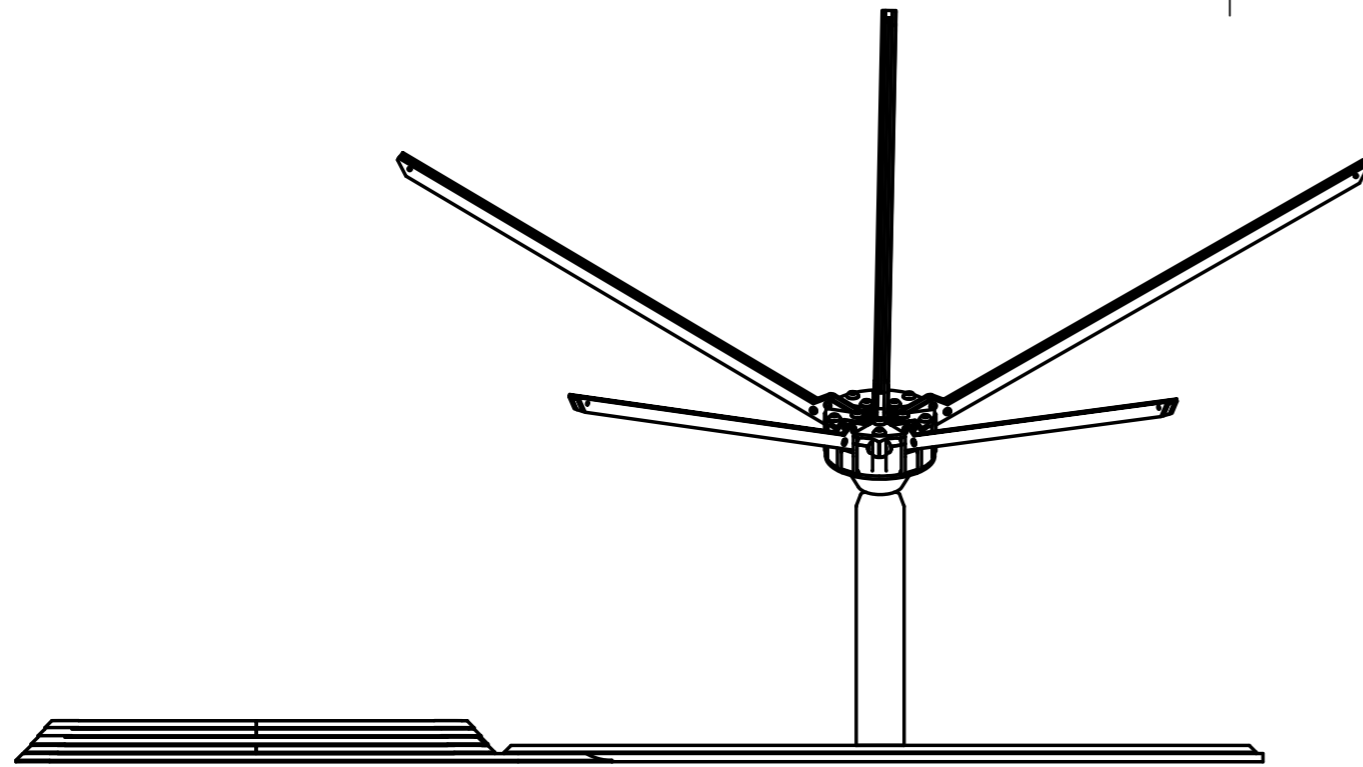
bill of materials

part name	creation method, material	image	price	quantity	drawing no.
leather seat	laser cut or stamped, leather colour selected to match airport decor stitched together		approx \$150 per m ² \$600 total	5	10
tension cables	shelf bought part cut to size, steel braided cable thread through hub and connected to arms		\$4	5/1	n/a
electronics hub	shelf bought part, electronics to connect bluetooth and tracking software		\$30	1	n/a
NFC chipset	shelf bought part, programmed NFC chip embedded within the leather of the chair programmed to direct to the user app		\$2	1	n/a
high tension bolts	shelf bought part, high tension bolts with threadlocker applied		\$30	10	n/a

Note: overall price approximately \$2000-2500 with included assembly costs and install costs as each seat requires an installation to ensure correct fitment and tolerances of all parts when assembled.

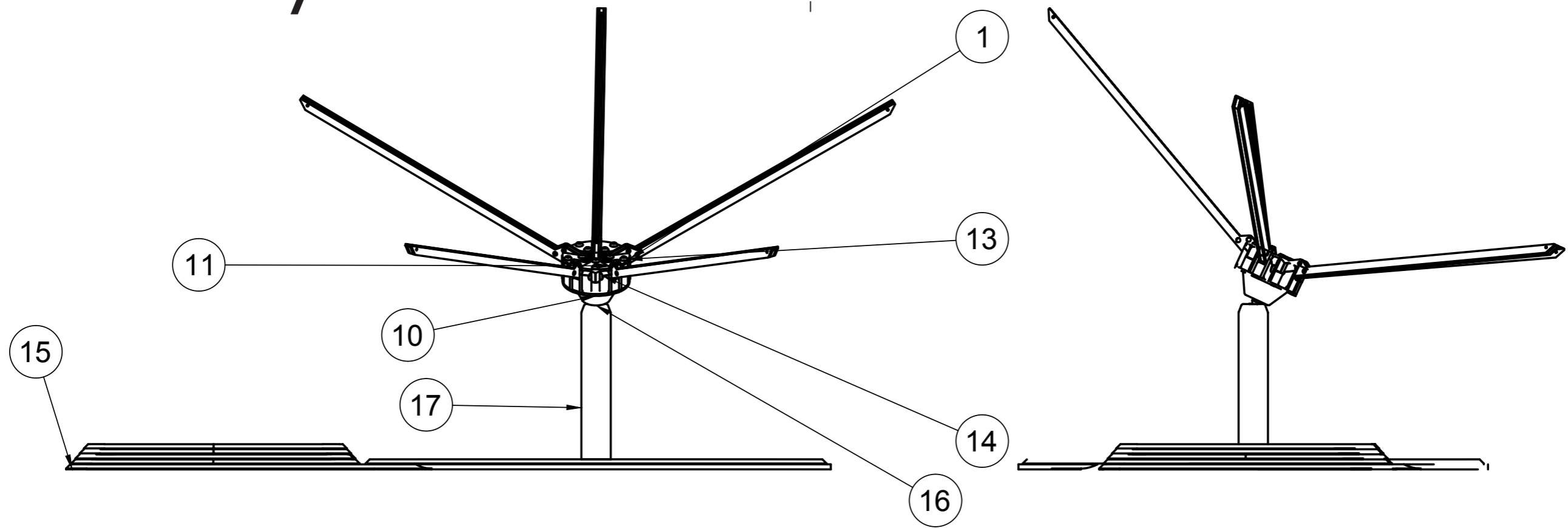
Note: contact selected manufacturers for technical documentation of shelf bought parts.

assembly view



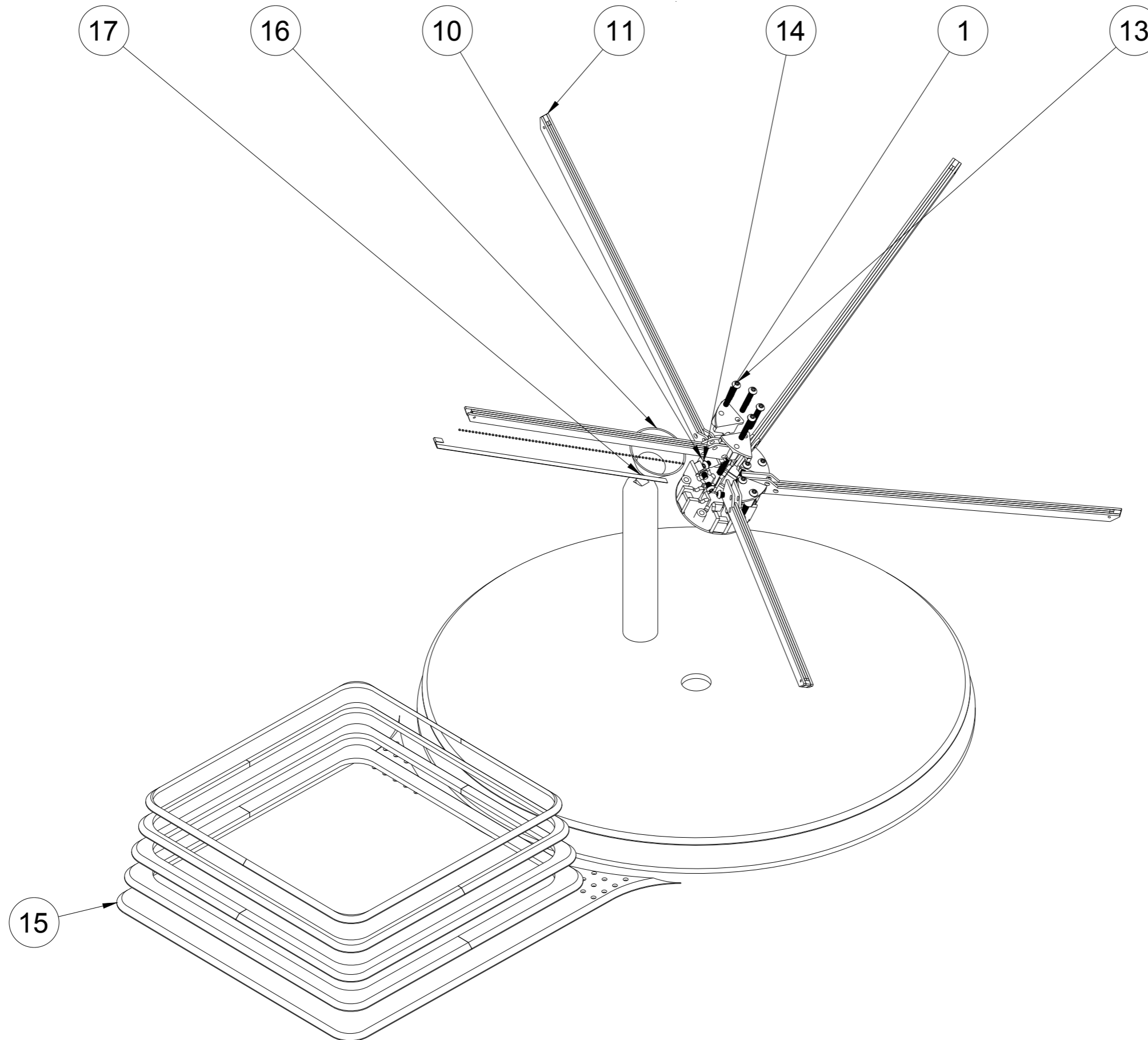
Dept.	Technical reference	Created by Callum Burton 30/10/20	Approved by
		Document type	Document status
		Title 3d print joint final	DWG No.
		Rev.	Date of issue
			Sheet 1/1

assembly view labelled



Parts List		
Item	Qty	Part Number
1	5	Top screw plate
10	1	Component11
11	5	Joint plasma_Hinge arm exterior
13	10	92095A508
14	10	91239A516
15	1	Base v2
16	1	Component15
17	1	Component16

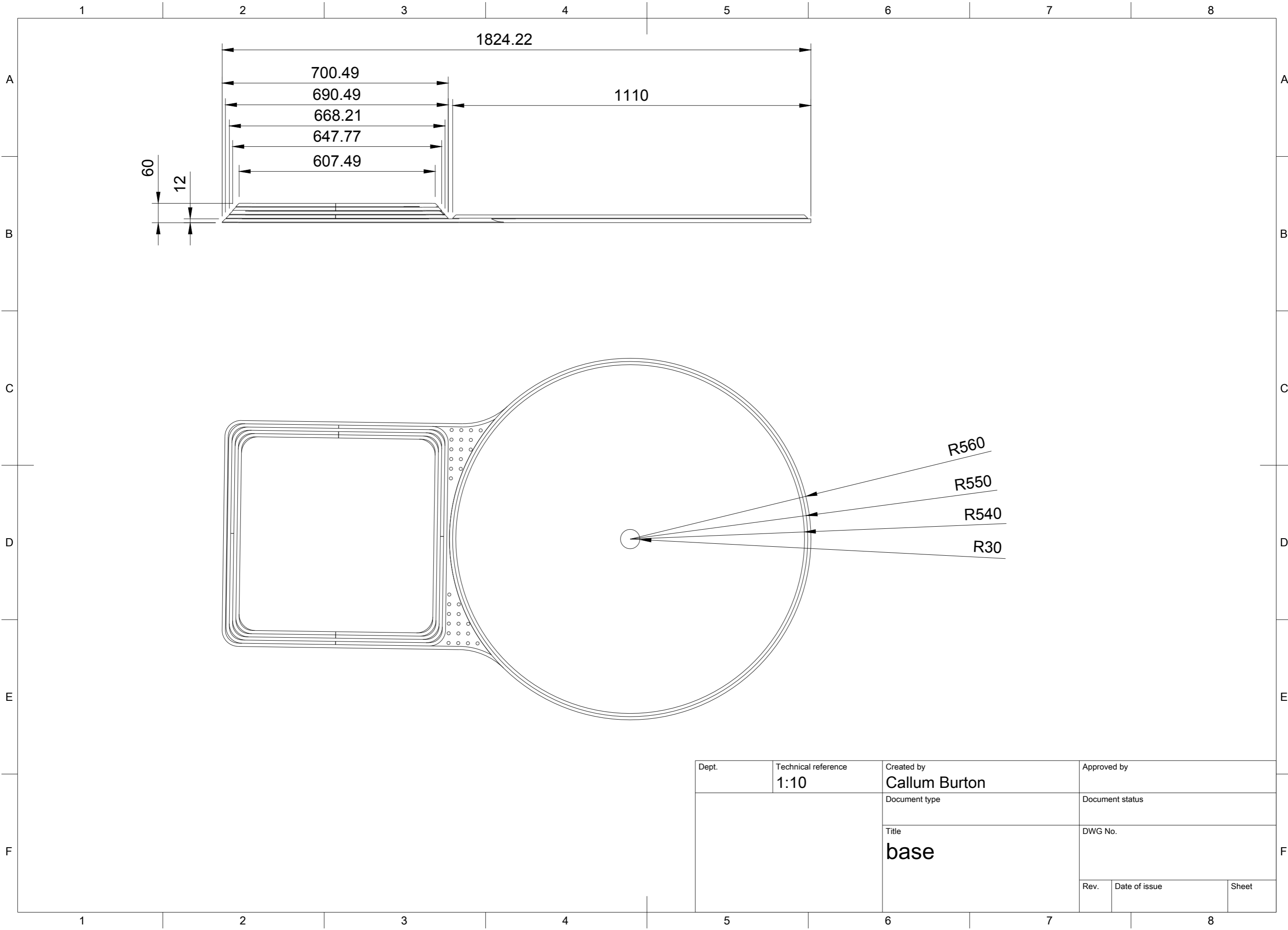
exploded view labelled



Parts List		
Item	Qty	Part Number
1	5	Top screw plate
2	2	Lower block
3	1	Front stop
4	1	Rear stop support
5	1	Rear stop plate
6	1	Main bottom plate
7	2	Upper Block
8	1	Component9
9	1	Component10
10	1	Component11
11	5	Joint plasma_Hinge arm exterior
12	1	Joint
13	10	92095A508
14	10	91239A516
15	1	Base v2
16	1	Component15
17	1	Component16

part and assembly
detail drawings





60
12

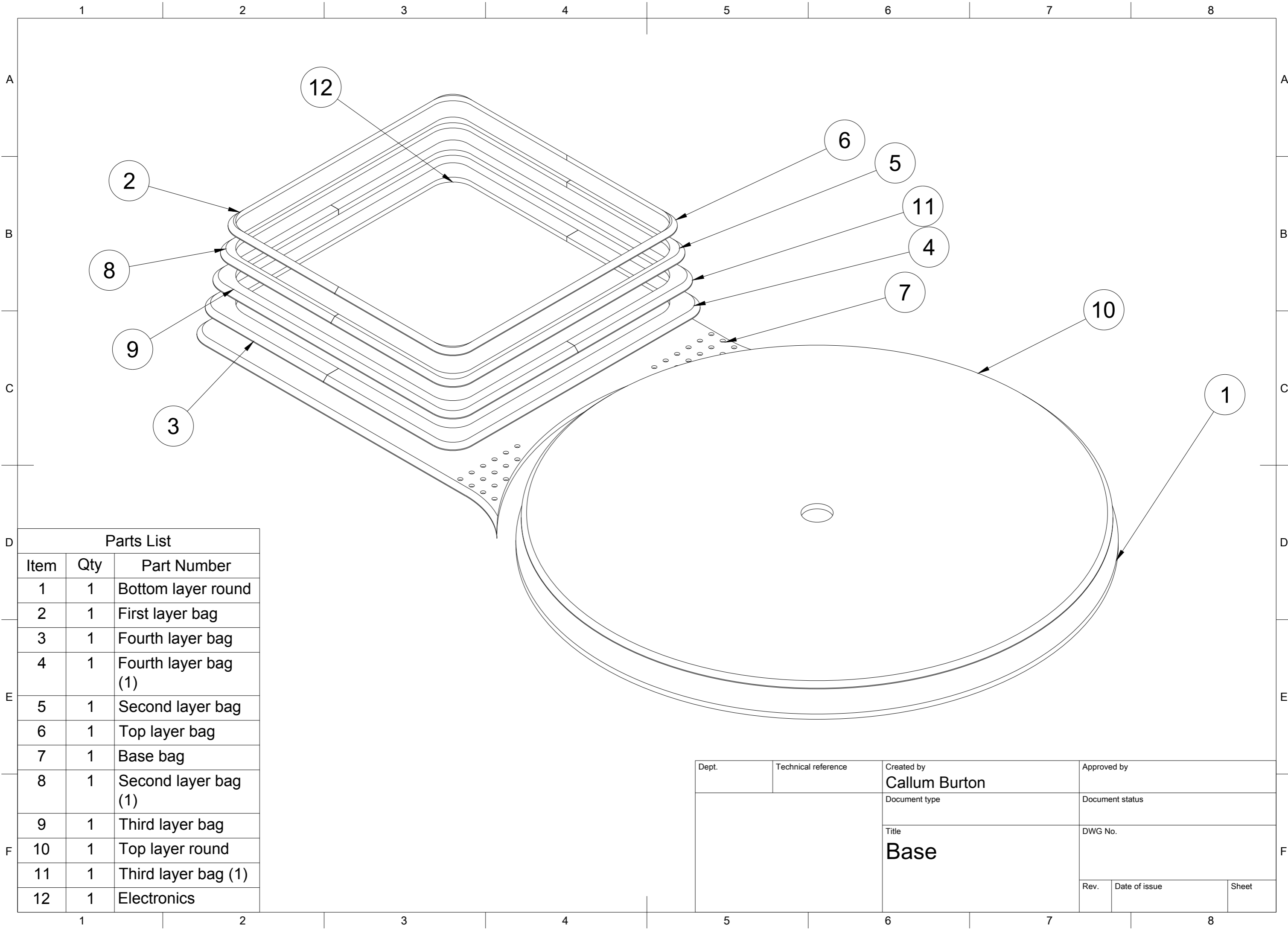
1824.22

700.49
690.49
668.21
647.77
607.49

1110

R560
R550
R540
R30

Dept.	Technical reference 1:10	Created by Callum Burton	Approved by	
		Document type	Document status	
		Title base	DWG No.	
	Rev.	Date of issue	Sheet	

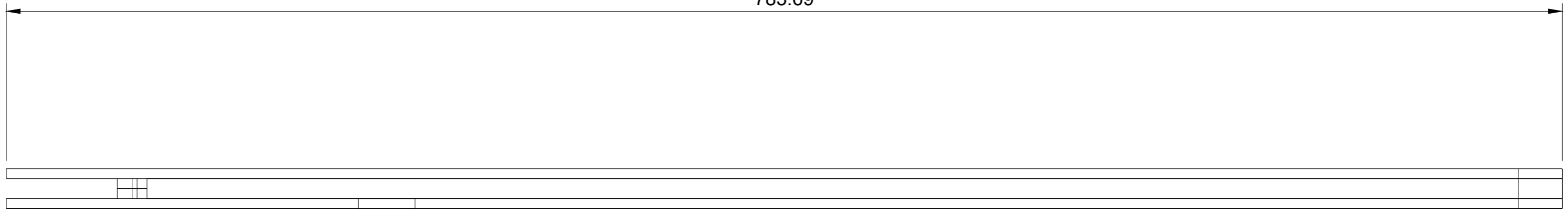


Parts List

Item	Qty	Part Number
1	1	Bottom layer round
2	1	First layer bag
3	1	Fourth layer bag
4	1	Fourth layer bag (1)
5	1	Second layer bag
6	1	Top layer bag
7	1	Base bag
8	1	Second layer bag (1)
9	1	Third layer bag
10	1	Top layer round
11	1	Third layer bag (1)
12	1	Electronics

Dept.	Technical reference	Created by Callum Burton	Approved by
		Document type	Document status
		Title Base	DWG No.
Rev.	Date of issue	Sheet	

783.69



707.82

75.86

70.86

55.86

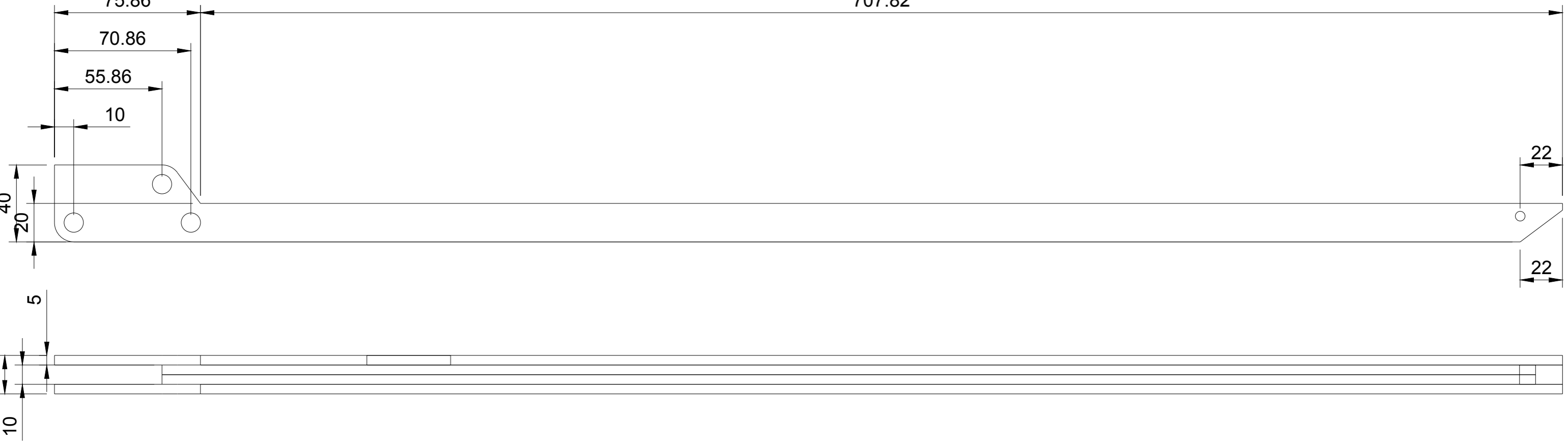
10

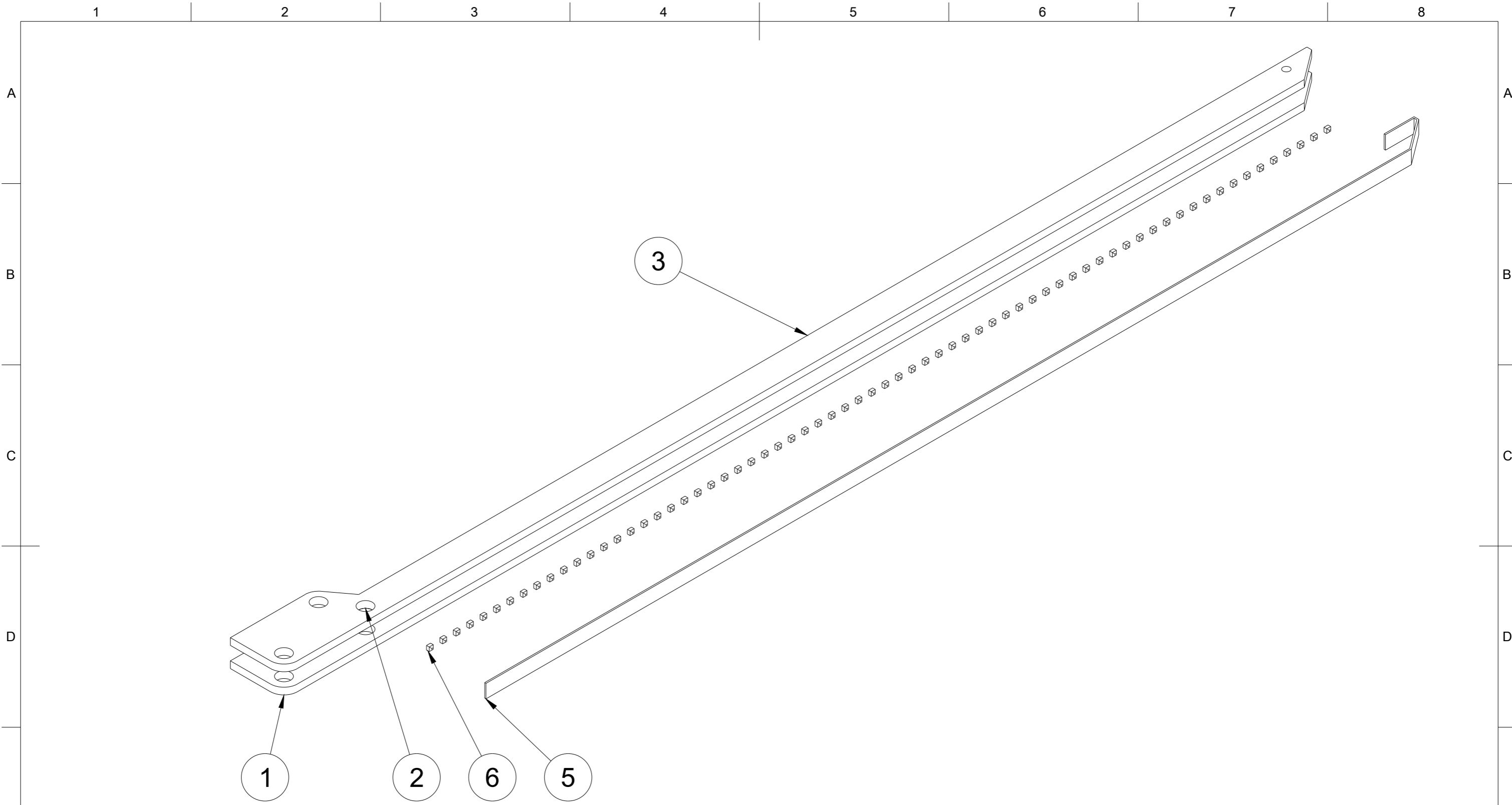
40
20

22

22

5
20
10

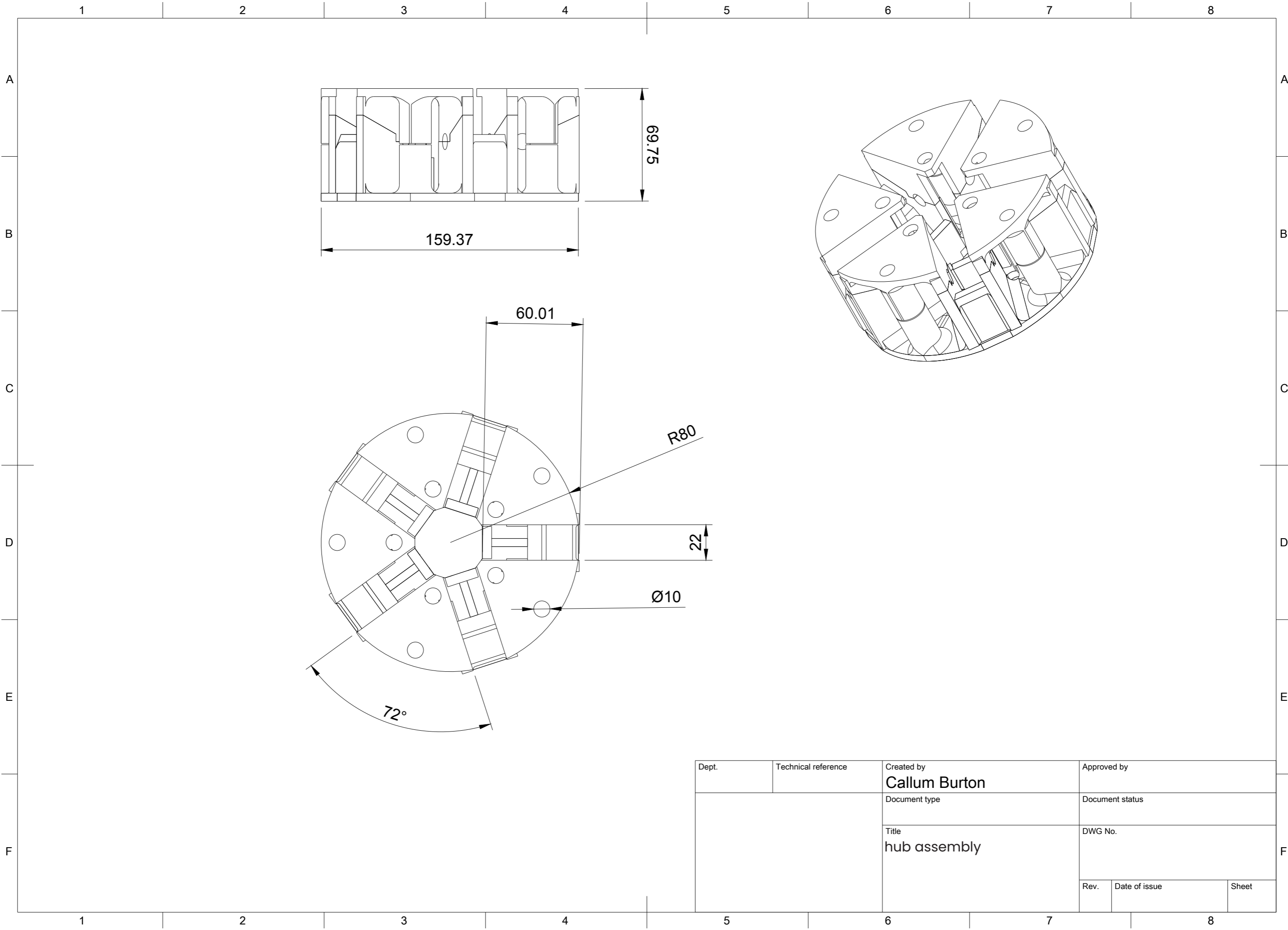




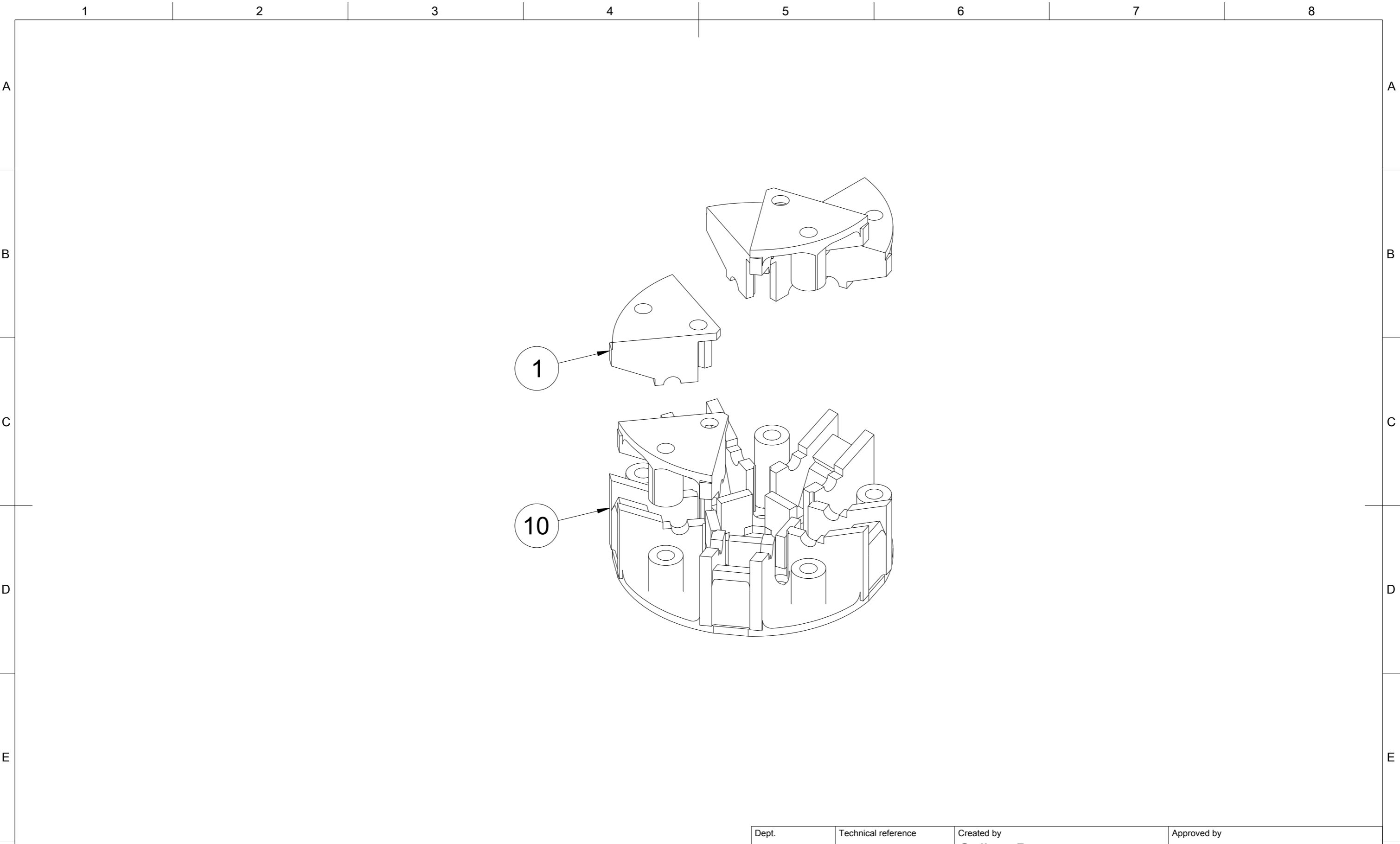
Parts List

Item	Qty	Part Number
1	1	Hinge arm exterior
2	1	Component3
3	1	Hinge arm exterior (1)
4	1	Component5
5	1	Light shroud
6	1	Lights

Dept.	Technical reference	Created by Callum Burton	Approved by
		Document type	Document status
		Title Seating arm	DWG No.
		Rev.	Date of issue
		Sheet	

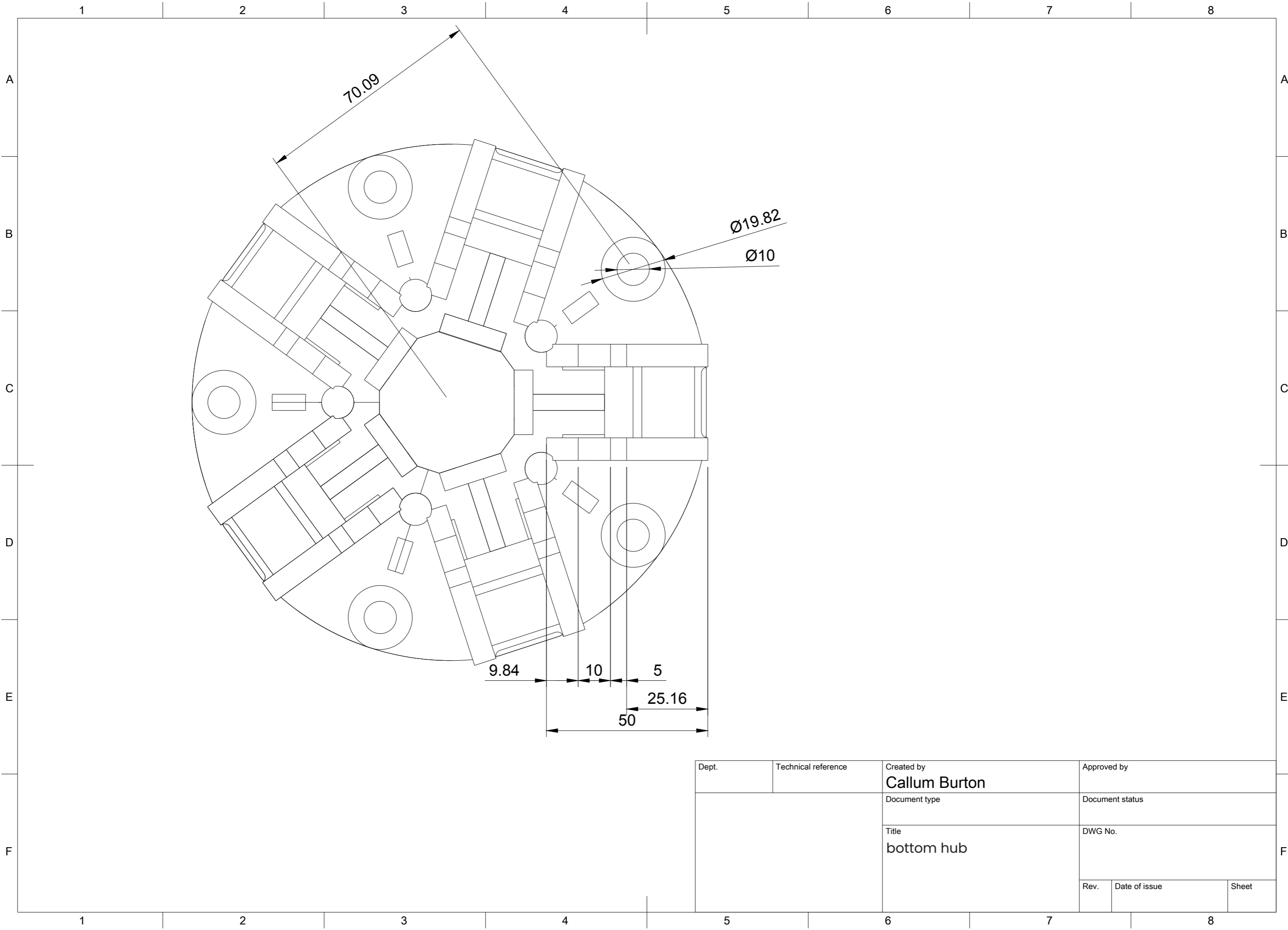


Dept.	Technical reference	Created by Callum Burton	Approved by	
		Document type	Document status	
		Title hub assembly	DWG No.	
		Rev.	Date of issue	Sheet

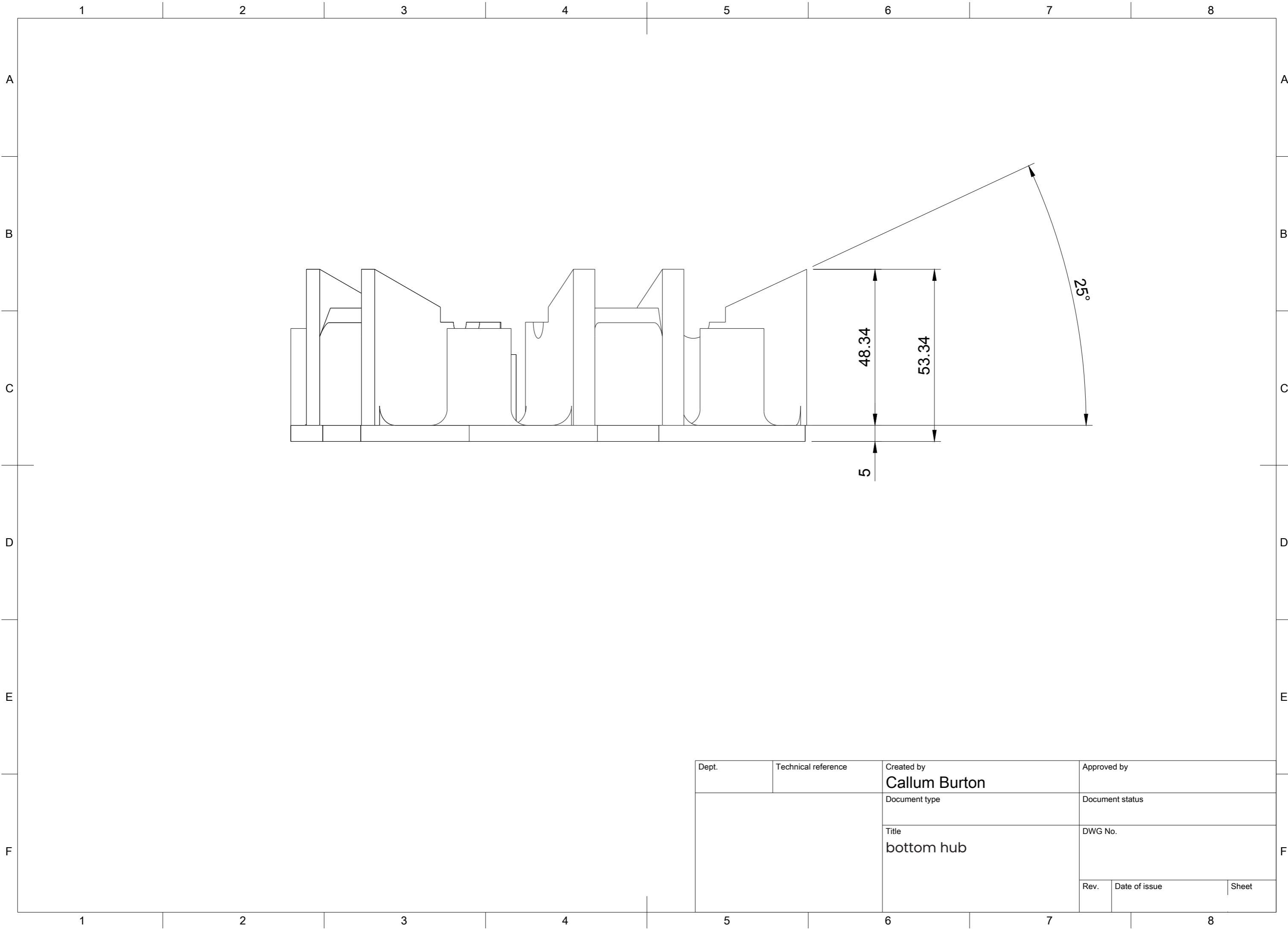


Parts List		
Item	Qty	Part Number
1	5	Top screw plate
10	1	Bottom block

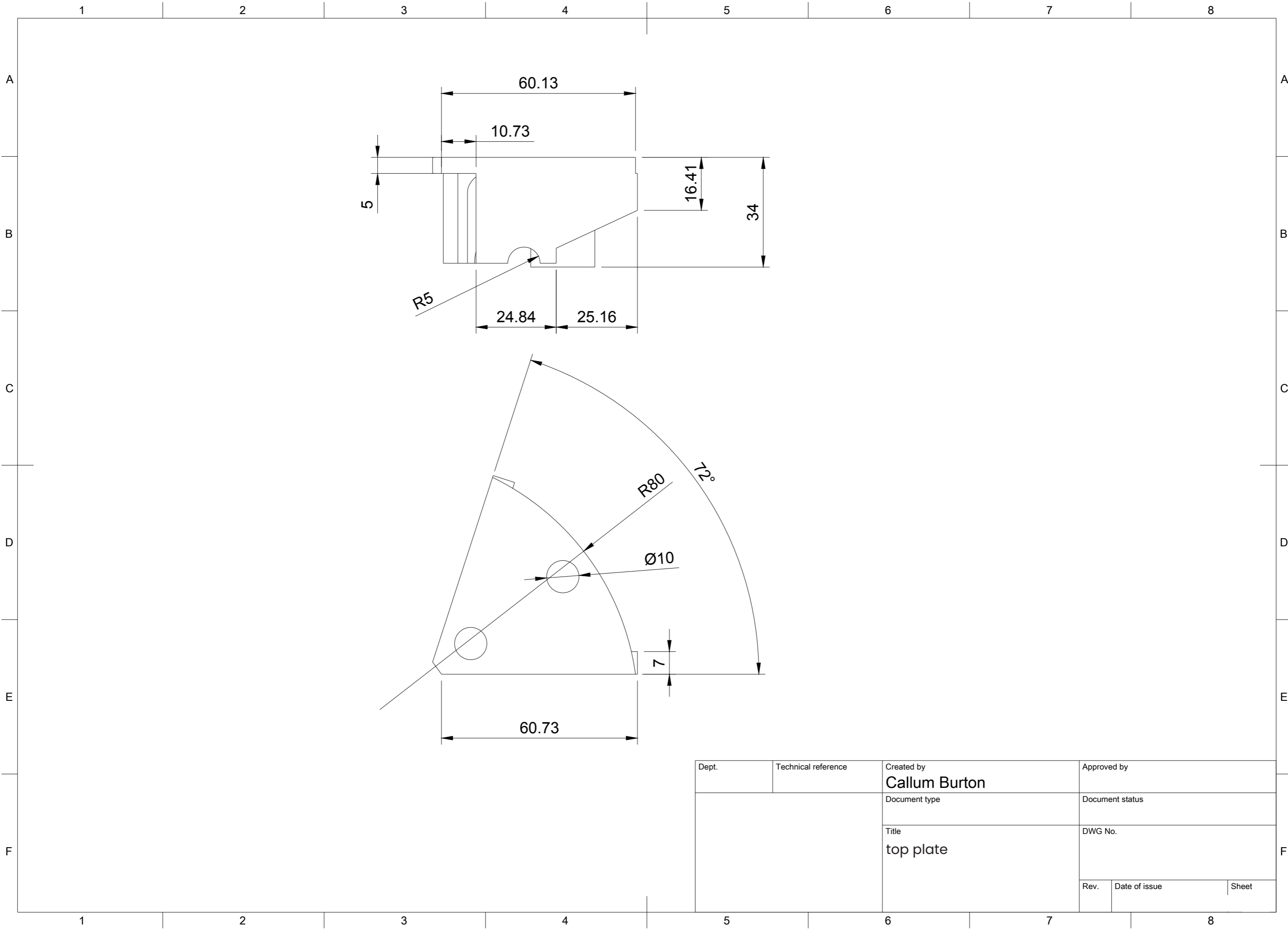
Dept.	Technical reference	Created by Callum Burton	Approved by
		Document type	Document status
		Title hub assembly	DWG No.
		Rev.	Date of issue
		Sheet	



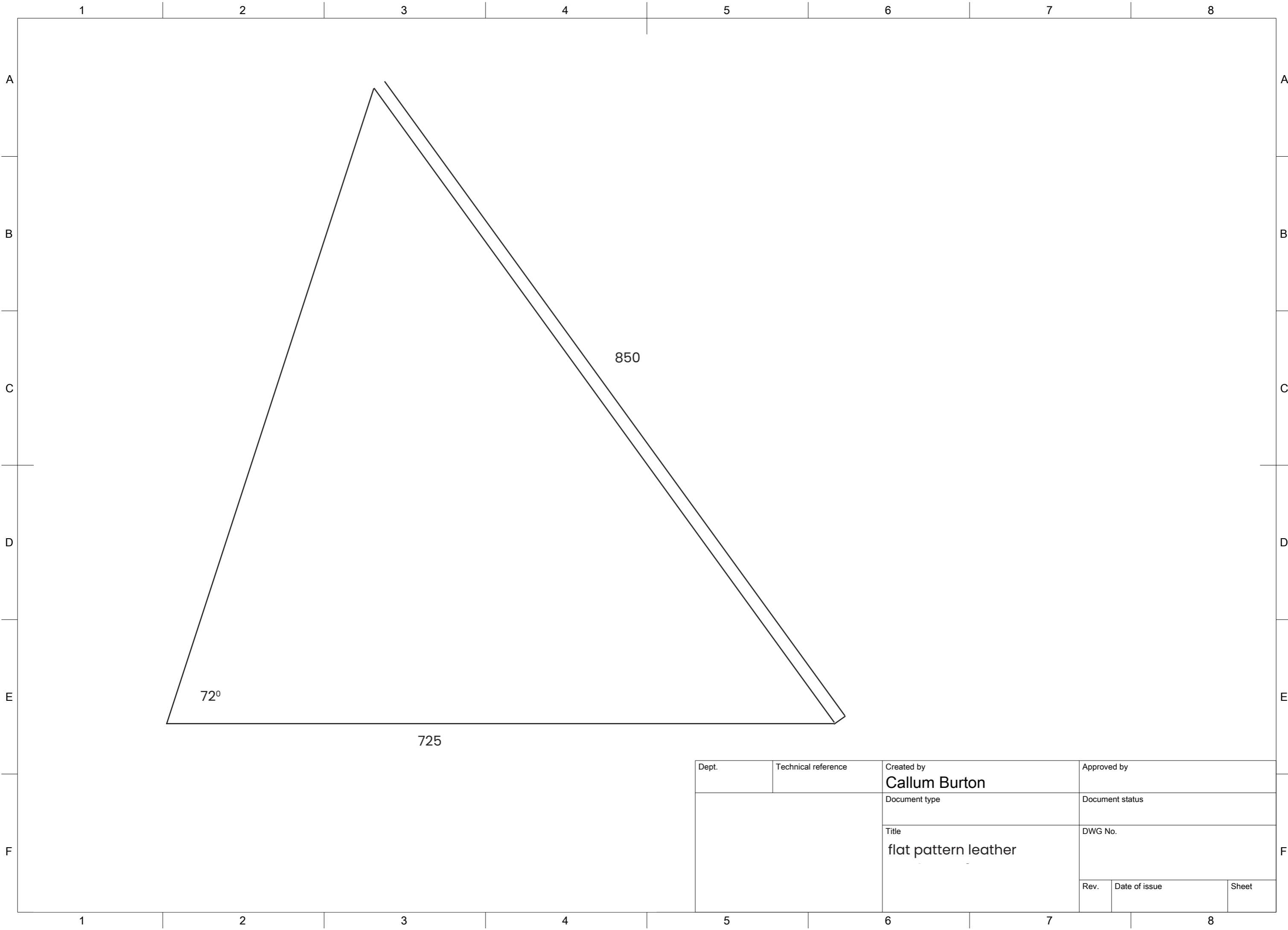
Dept.	Technical reference	Created by Callum Burton	Approved by	
		Document type	Document status	
		Title bottom hub	DWG No.	
		Rev.	Date of issue	Sheet



Dept.	Technical reference	Created by Callum Burton	Approved by	
		Document type	Document status	
		Title bottom hub	DWG No.	
	Rev.	Date of issue	Sheet	



Dept.	Technical reference	Created by Callum Burton	Approved by	
		Document type	Document status	
		Title top plate	DWG No.	
		Rev.	Date of issue	Sheet



Dept.	Technical reference	Created by Callum Burton	Approved by	
		Document type	Document status	
		Title flat pattern leather	DWG No.	
		Rev.	Date of issue	Sheet